

Barry Callebaut

in Chicago, IL



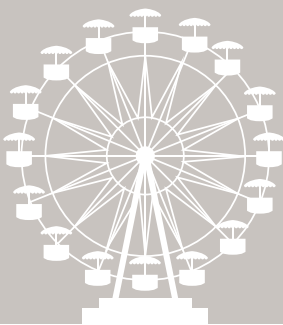
2007 HQ OPENS

Barry Callebaut Americas' Headquarters opens in Chicago's Groupon Building on March 17 with 11,207 square feet of space for 36 employees.



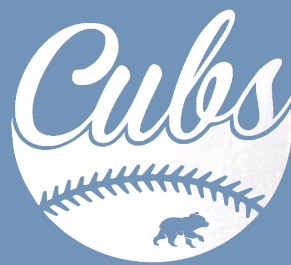
2008 CHOCOLATE ACADEMY OPENS

*The Chocolate Academy opens on September 24 and adds 16,501 square feet - **150% office expansion.***



2014 EXPANSION

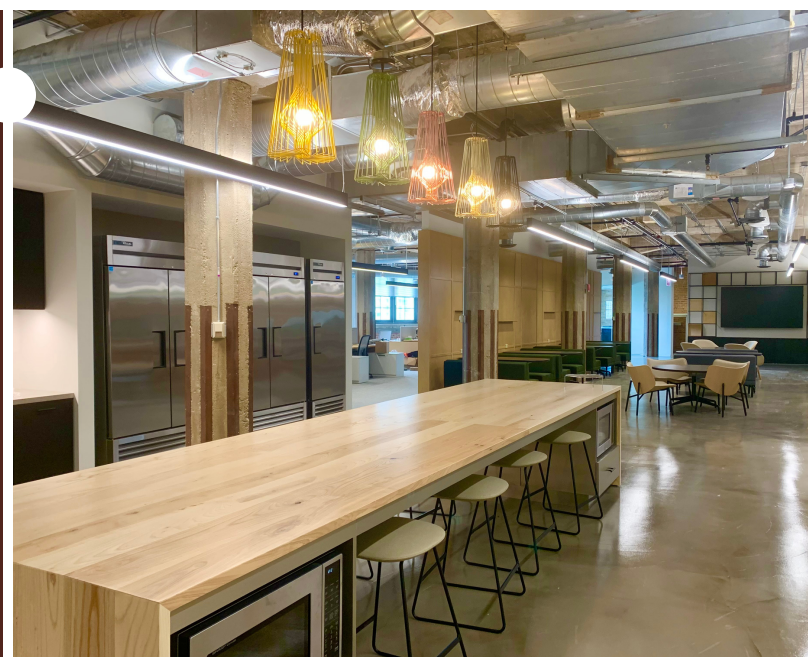
*Barry Callebaut expands their office onto the 7th floor of the Groupon building, adding 10,087 square feet - **36% office expansion.***



2020 NEW OFFICE

Barry Callebaut moves entire office to the 7th floor with the exception of the 8th floor Academy, making the office 56,478 square feet with 215 employees.

500% bigger than the original office with 600% more employees



Contact:

media_americas@barry-callebaut.com

#BC4Chicago