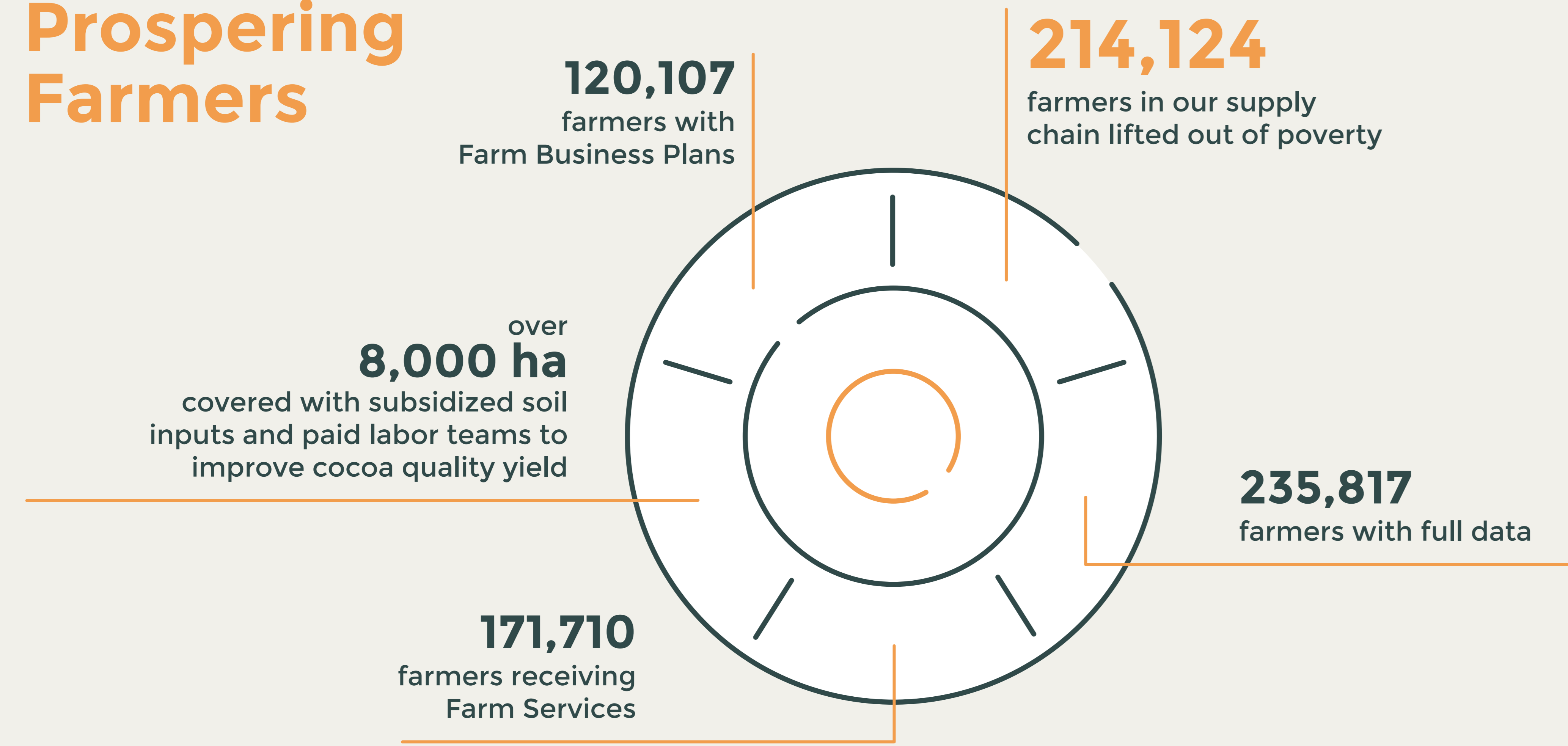
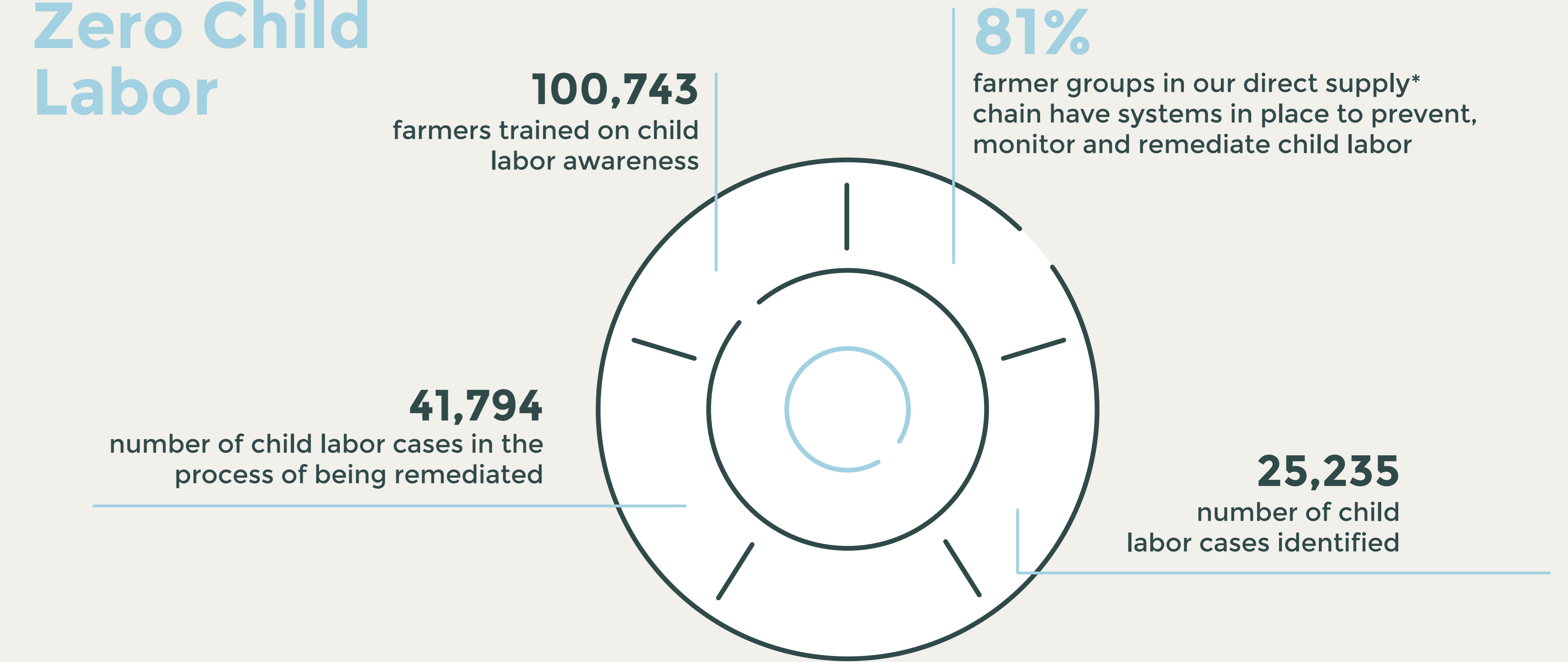


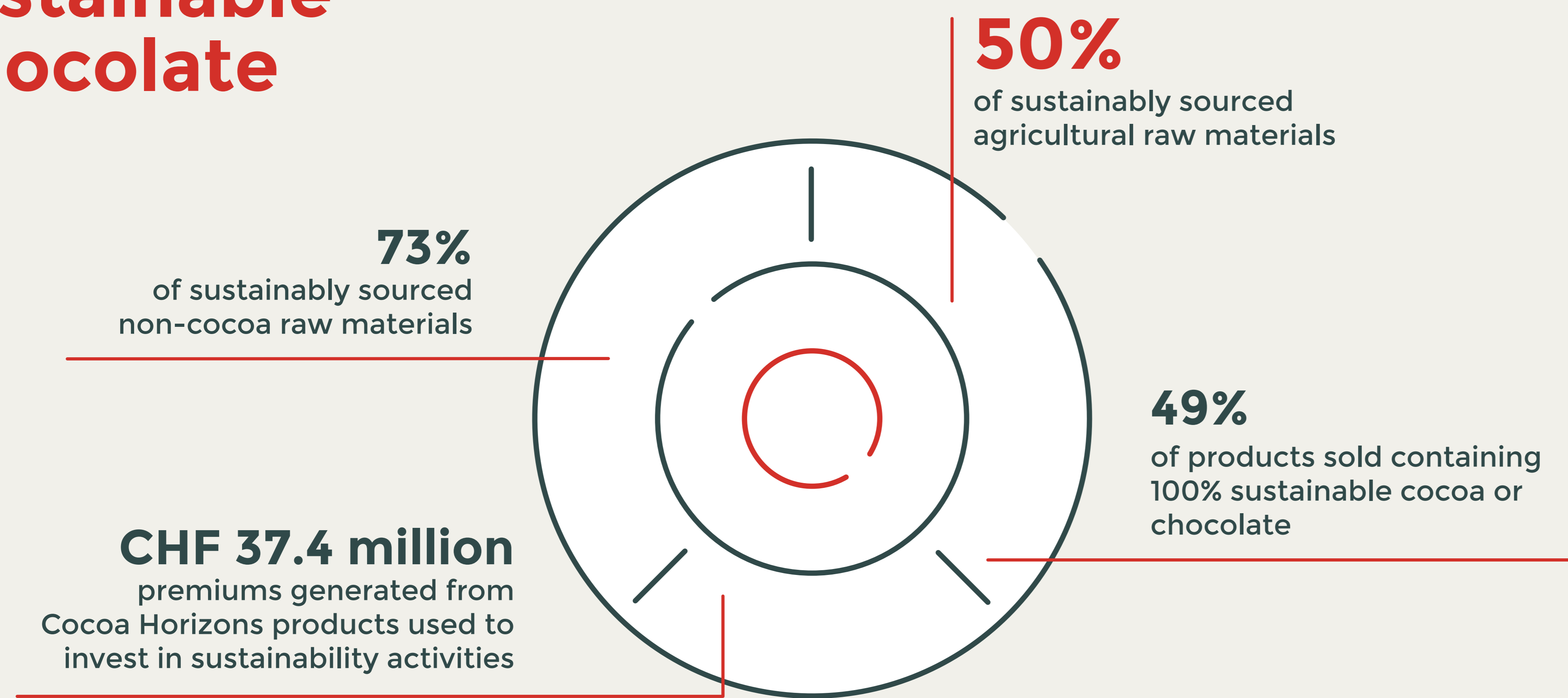
## Prospering Farmers



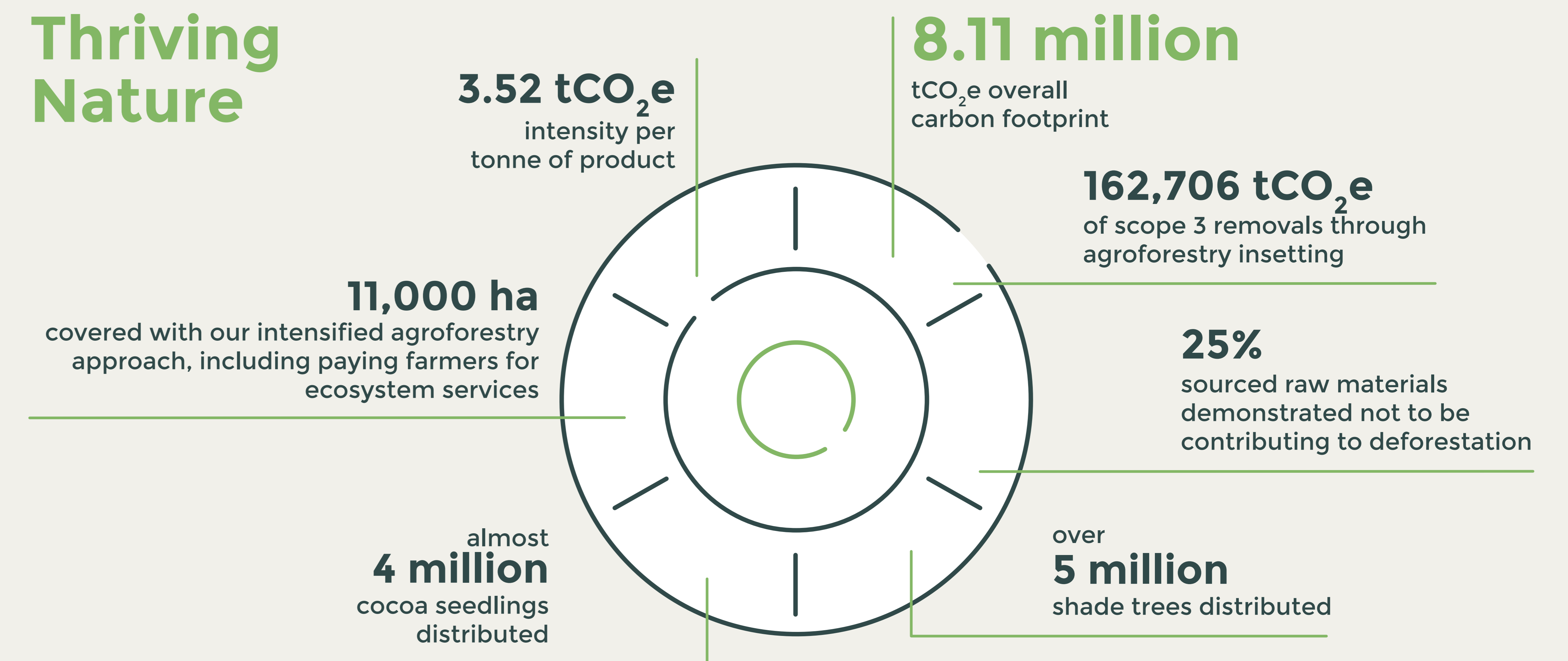
## Zero Child Labor



## Sustainable Chocolate



## Thriving Nature



**Prospering Farmers** | By 2025, more than 500,000 cocoa farmers in our supply chain will have been lifted out of poverty.

**Zero Child Labor** | By 2025 we will eradicate child labor from our supply chain.

**Sustainable Chocolate** | By 2025, we will have 100% sustainable ingredients in all of our products.

**Thriving Nature** | By 2025, we will be carbon and forest positive.

\*In line with our core principle of partnering with other stakeholders to create tangible impact on the ground and make sustainable chocolate the norm, this KPI extends beyond our direct supply chain, covering more than 12,000 farmers from our indirect supply.